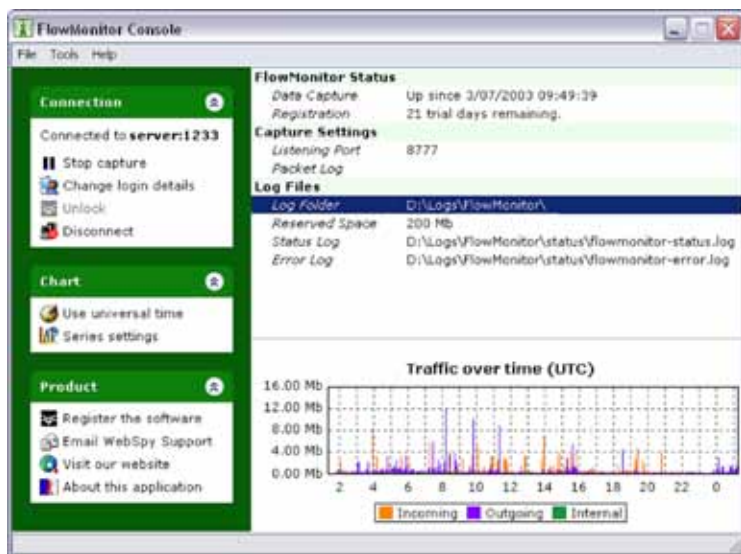


WebSpy FlowMonitor records Netflow information from supported Cisco routers to provide an exact log of your Internet and network usage. This information can be used to reconcile billing with your Internet Service Provider, or charge client sites for bandwidth usage.

FlowMonitor consists of two parts: the FlowMonitor service that captures and logs Netflow data sent to it by a Cisco router, and the FlowMonitor Console that provides the interface for configuring your FlowMonitor services.



#### Minimum Requirements

- ▶ 1 GHz CPU or faster
- ▶ 512 MB RAM
- ▶ 500 MB free HDD Space

#### All Systems

- ▶ Microsoft® Internet Explorer 5 or above recommended.

#### Windows® 98/SE/ME

- ▶ Service Pack 1 recommended.

#### Windows® NT

- ▶ Service Pack 6a recommended.

#### Windows® 2000

- ▶ Windows Professional, Server, Advanced Server.
- ▶ Service Pack 2 recommended.

#### Windows® XP

- ▶ Windows XP Home and Professional.
- ▶ Service Pack 2 recommended.

#### Windows® Server 2003

- ▶ A special build of Flowmonitor is available for Windows® Server 2003. Contact support@webspy.com for more information.

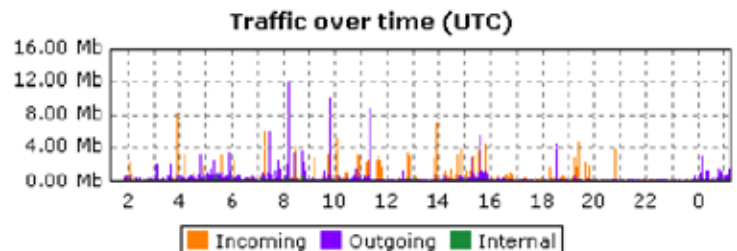
## Key Features

### Internet connection byte accounting

The FlowMonitor service creates byte-accurate log files of your Internet and network usage. You can then analyze these files using WebSpy Analyzer or Vantage. FlowMonitor records both incoming and outgoing data on each configured router interface.

### Real-time bandwidth usage chart

When connected to the data capture service, the FlowMonitor management console displays a chart of your bandwidth usage to instantly identify traffic spikes.



### Integration with WebSpy Analyzer & Vantage

You can use WebSpy Analyzer & Vantage's intuitive drilldown interface to explore FlowMonitor's data and produce accurate historical reports on your organization's Internet and network usage.

### Easily Configurable

The FlowMonitor Console provides an easy-to-use interface for configuring all your FlowMonitor Services.

